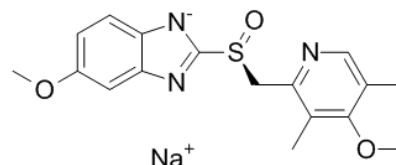


Product Name : Esomeprazole sodium
Cat. No. : PC-45146
CAS No. : 161796-78-7
Molecular Formula : C₁₇H₁₈N₃NaO₃S
Molecular Weight : 367.3979
Target : Proton Pump
Solubility : 10 mM in H₂O



Biological Activity

Esomeprazole sodium is a **proton pump** inhibitor that reduces stomach acid secretion by inhibition of the **H⁺/K⁺-ATPase** in the parietal cells.

Esomeprazole is the (S)-(-)-enantiomer of omeprazole for treatment of dyspepsia, peptic ulcer disease, and gastroesophageal reflux disease.

References

Wayne Goh, et al. J Pharm Pharm Sci. 2014;17(3):439-46

Caution: Product has not been fully validated for medical applications. Lab Use Only!

E-mail: tech@probechem.com